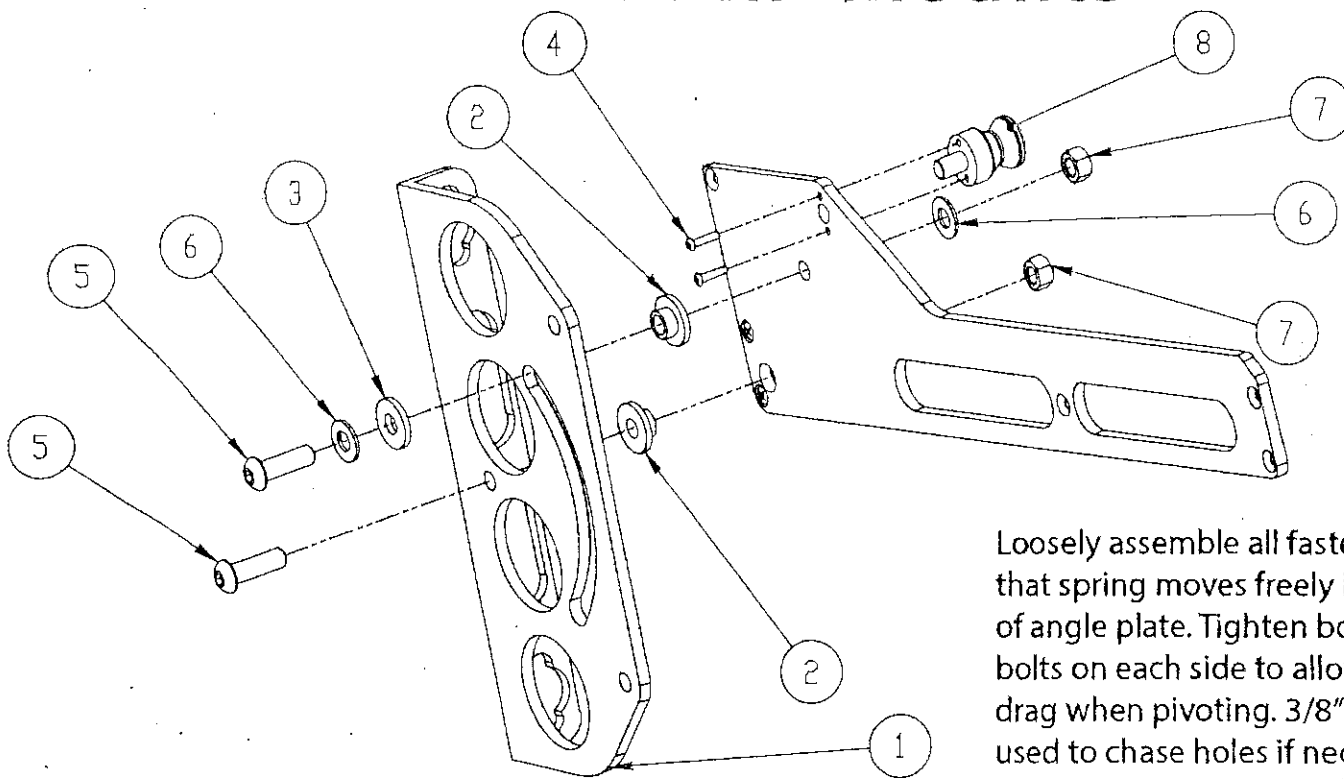
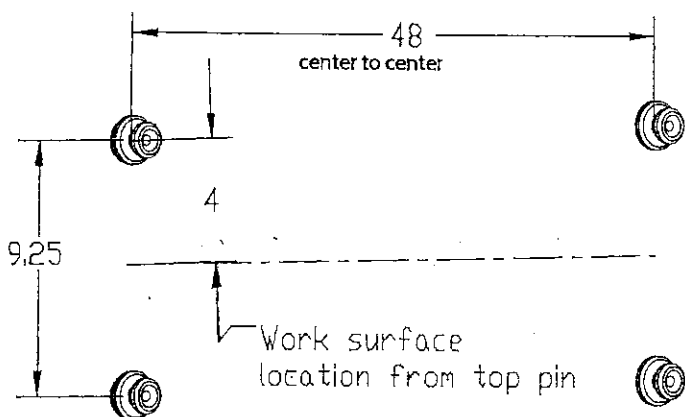
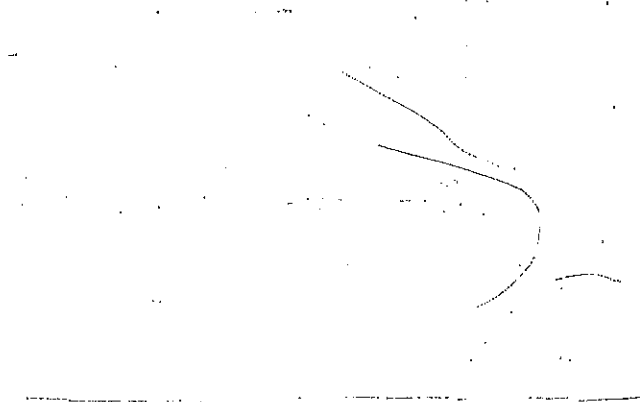


# 48" Flip Bench With FRP Mounts



Loosely assemble all fasteners. Check that spring moves freely in and out of angle plate. Tighten both 3/8" bolts on each side to allow some drag when pivoting. 3/8" drill may be used to chase holes if necessary.

ITEM NO.	DESCRIPTION	Qty (both sides)
1	Side angle	2
2	Nylon shoulder Washer	4
3	Nylon washer	2
4	8-32 SS Button head	4
5	3/8" Button head x 1.25	4
6	3/8" SS Washer	4
7	3/8" Nylon Lock Nut	4
8	Spring Pin assy	2



Renegade/Haulmark trailers (FRP) :

Drill 4 holes in desired location using dimensions at left. Be sure the location you choose is accessible on the other side of wall for the encapsulated nuts. Use a drill size that will allow a tight fit to the shaft of the encapsulated nut. (typically .480")

**Pattern is 48" wide by 9 1/4" high.  
Drill 4 holes to these dimensions.**

